

SUPER INSULATED LIVESTOCK WATERERS

RELAX...With Brower's Dependable, Cost Efficient Watering For Cattle, Hogs, Sheep, Horses, Pets and Wildlife



Extra thick foam insulation R-value of 7.14 per inch - clings tightly around the trough and on the jacket. Water, oxidant, mildew, oil resistant. Not attractive to rodents.



On models MC, MJ & MK, troughs, jackets and valve covers are powder coated with corrosion resistance equivalent to stainless steel. Drawn steel troughs are rounded for maximum animal protection.



Model MK access door to water & heater. Readily accessible with 2 1/4 turn fasteners.

Hogs... Model MC32

Water up to 150 hogs. Install in a fence line to serve 2 pens. Rugged lid keeps dirt out. Mud grates keep water clean.

Model MC32H...

This is Model MC32 less lids and mud grates. Mount MC32H on a pedestal for horses.



Model MJ31

A single trough version of Model MK32



Horses, Calves, WildlifeModel MK32

Our most popular unit. 18" high to water 25 horses, 40 ponies, 100 calves, 40 cattle as well as wildlife.



FULLY WARRANTED

All Components including the heater and our valves are covered by an 18 month non-prorated warranty.



Cattle... Model MH30

Serves 125 head of cattle or 70 horses. Suitable for range, pasture or feedlot use. Stainless steel trough. Cast iron valve cover.

SUPER INSULATED LIVESTOCK WATERER SPECIFICATIONS

Model No.	MC32E	MC32N	MK32E	MK32N	MJ31E	MJ31N	MH30E	MH30N
Overall Height	11 3/4"	11 3/4"	21 1/4"	21 1/4"	21 1/4"	21 1/4"	29"	29"
Drinking Height	8 1/2"	8 1/2"	18"	18"	18"	18"	24"	24"
Width	13"	13"	13"	13"	13"	13"	21"	21"
Length	23 3/4"	23 3/4"	23 3/4"	23 3/4"	14 3/4"	14 3/4"	31"	31"
Trough Depth	4 1/2"	4 1/2"	4 1/2"	4 1/2"	4 1/2"	4 1/2"	7"	7"
Heated, Electric	250 watt	None	250 watt	None	250 watt	None	500 watt	None
Shipping Weight	42 lb.*	39 lb.*	46 lb.*	43 lb.*	34 lb.*	32 lb.*	102 lb.	100 lb.

* Shippable via ground package. Please specify Electric (E) or No Heat (N) when ordering. Model MC32 is available without lids and mud grates. (order Model MC32H).

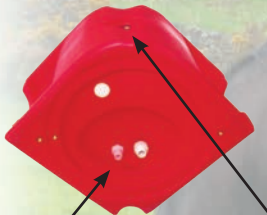
THE RACE IS OVER... OUR PERFORMANCE ONE BOX STALL DRINKER WINS BY SEVERAL LENGTHS

For corner installations in box stalls - but can be installed outdoors as well



Stainless steel access plates.

1/4 moon design on back corner for securing up to a 2" (5.1 cm) PVC tube for plumbing from above or below.



Foam filled R-value of 7.5 per inch.

Internal 3/4" (1.9 cm) AND external 2" (5.1 cm) drains; drinker is very easy to clean - no disassembly for cleaning required.



Double wall, single piece poly construction - ALL SMOOTH.



We've been watering animals since 1903!

VT100 Valve Series handles a wide range of water pressures. Simple water level adjustment, easy to clean.



Optional heater 250 watts, 110 volts. We tested this unit in a cold chamber at minus 30°F (-34.4°C). No freezing occurred at this temperature even after 7 days!

Heating cost is minimal - less than \$10 per heating season.



Optional Ground Mounting Tube (Model HT10) for hook up to underground service connections and for outdoor installations. Available in light gray. 26" H x 12" ID & 14" OD (66.1 cm H x 30.5 cm ID & 35.6 cm OD)



Available in blue or red.

Industry's Best Warranty!

- All Poly Main Components
- 5 Years Unconditional Warranty**
- And An Additional 11 Year Pro-Rated Warranty
- Valve & Heater 18 Months Unconditional Warranty.

**USA Patent Numbers
D480516 and 6,722,313**

BOX STALL DRINKER SPECIFICATIONS

Product	Approximate Capacity			Size Inches (cm)				Valve	Heater Electric	Shipping Weight Lbs (kg)
	Animals	Water		Drink Opening	Overall Width	Overall Length	Overall Height			
		Gallons	Liters							
BOX STALL DRINKER	1 horse in a box stall or 15 head of most any species except swine	1.5	5.7	8 1/2 x 9 (21.6 x 22.9)	15 1/2 (39.4)	15 1/2 (39.4)	12 (30.5)	VT100	250 Watts Optional	17 (7.7) Heated 15 (6.8) No Heat

* Model Nos. **MPO1BE** - Heated, Blue Color; **MPO1BN** - No Heat, Blue; **MPO1RE** - Heated, Red; **MPO1RN** - No Heat, Red.
36 All models shippable via ground package.

AS VERSATILE AS YOU CAN GET...

Water Horses, Calves, Small Ruminants, Wildlife With Performance One Model MP06...

For Stalls, Corrals and Paddocks

VT100 Valve Series handles a wide range of water pressures. Simple water level adjustment, easy to clean.



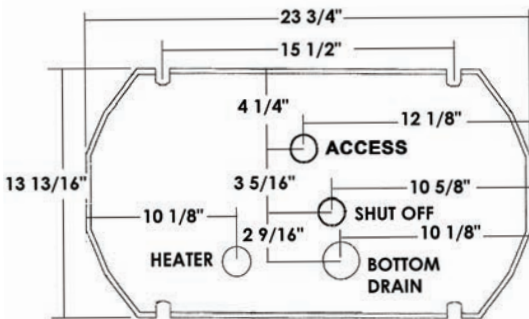
Double wall, single piece poly construction - ALL SMOOTH!

Foam filled insulation - R value of 7.5 inch which offers lots of freeze protection

Optional heater, 250 watts, 110 volts. We tested this unit in a cold chamber at minus 30° F (-34.4° C).

No freezing occurred at this temperature - even after 7 days.

Heating cost is minimal - Less than \$10.00 per heating season.



MPO6 FOOTPRINT - TOP DOWN VIEW

Easy access to valve and heater - just lift stainless steel access plate.

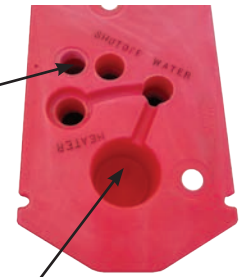


Large 2" (5.1 cm) external and internal clean out drains.

Drinker is very easy to clean - no disassembly for cleaning required.



Four recessed anchor notches for secure installation.



Cavity for warm climate installations only. Some warm geographic areas do not use a riser and may only have a buried supply line protruding through a concrete pad. The cavity can be used to make the connection from the supply line to our valve.



We've been watering animals since 1903!

USA Patent Number 6,722,313 B2

Industry's Best Warranty!

- All Poly Main Components
- 5 Years Unconditional Warranty**
- And An Additional 11 Year Pro-Rated Warranty
- Valve & Heater - 18 Months Unconditional Warranty.

MP06 SPECIFICATIONS

Model No.	Approximate Capacity			Size Inches (cm)				Valve	Electric Heater	Shipping Weight Lbs.
	Animals	Water		Drink Openings	Overall Width	Overall Length	Overall Height*			
		Gallons	Liters							
MP06E	25 Horses 40 Ponies 100 Calves 40 Cattle	6	22.7	6 1/2 x 10 (16.5 x 25.4)	13 (33.0)	23 3/4 (60.3)	21 1/2 (54.6)	VT100	250 Watts	30 (13.6)
MP06N	25 Horses 40 Ponies 100 Calves 40 Cattle	6	22.7	6 1/2 x 10 (16.5 x 25.4)	13 (33.0)	23 3/4 (60.3)	21 1/2 (54.6)	VT100	250 Watts	26 (11.8)

* Drinking Height 18". Shippable via ground package.

PERFORMANCE ONE E-DRINK

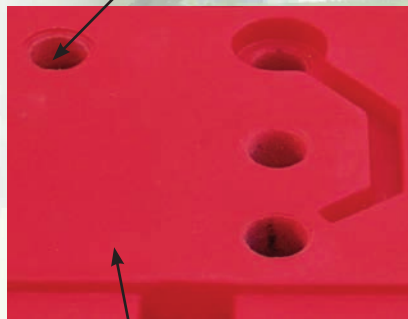
Electrically Heated • Energy Efficient

You Only Need One Unit To Water Up To 150 Head Of Most Any Species

MPO17

A typical winter heating bill - \$10.00 or less! Why? Two reasons. Our drinker has 17 gallons of capacity. Incoming water carries heat energy. The more water, the more heat. Our R-valve of 7.5 per inch holds the heat provided by incoming water. Secondly our supply line is in the water. You don't need extra heat to keep the line above the ground open. You do need proper installation to prevent the supply line underneath the drinker from freezing.

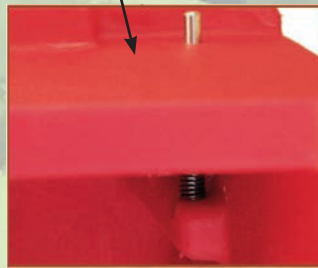
2-2 inch side drains and 1 threaded bottom port for optional inside drain.



Sealed bottom keeps out a moisture and rodents.



Stainless steel spring loaded valve cover removed easily. No loose parts to lose.

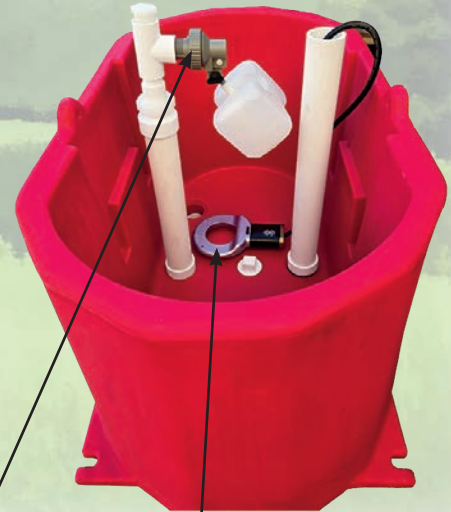


2 large drink openings 8" by 14" each. Drinker wells are 14" deep allowing most any animal to drink naturally.

100% poly construction. Molded with the most effective ultraviolet inhibitor. Tough enough for years of outdoor use.

Notched flanges for easy anchoring.

Over 300 square inches of access for easy hook up.



Dependable non-siphoning Durapride valve.

Proven (15 years of use) 250 watt heater.

Valve and Heater
18 month unconditional warranty.

Other Components
5 years unconditional warranty and an additional 11 year pro-rated warranty.

SPECIFICATIONS

Model No.	Approximate capacity			Size Inches (cm)				Valve	Heater Electric	Shipping Weight Lbs (kg)
	Animals	Water		Drink Opening	Overall Width	Overall Length	Overall Height			
		Gallons	Liters							
MPO17E	150 head	17	64.3	8 1/2" x 14" (21.6 x 35.6)	17 3/4" (45.1 cm)	19" (48.3)	29 1/2" (74.9)	23" (58.4)	250 watts	40 (18.2)
MPO17N	150 head	17	64.3	8 1/2" x 14" (21.6 x 35.6)	17 3/4" (45.1 cm)	19" (48.3)	29 1/2" (74.9)	23" (58.4)	none	37 (16.8)

* Shippable via UPS

USA Patent Number
6,722,313

PERFORMANCE ONE WITH LOWER ACCESS

*Energy Efficient • Handsome •
Perfect For Existing Drinker Replacement Or For New Installations*



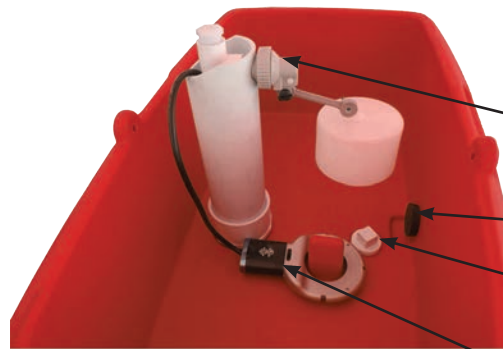
A typical annual heating bill with **Model MP012** might be somewhat higher than with Model MP017 - maybe \$15 instead of \$10! Model MP012 has the same foam filled double wall construction. Also, our **PATENTED** ports on the sidewall of the valve cover allow heat dispersal from underneath the valve cover into the drink openings.



Rugged notches for secure anchoring. Spring loaded pin allows easy removal of access panel. It takes a quarter turn with a straight edge screwdriver. Lower access opening is 6" by 19".

Checkmate! Great value and great features don't have to come in a boring, boxy profile. **Model MP012** is loaded and is also one of the better looking drinkers ever to reach the market.

Stainless steel spring loaded valve cover removes easily and is easily re-installed.

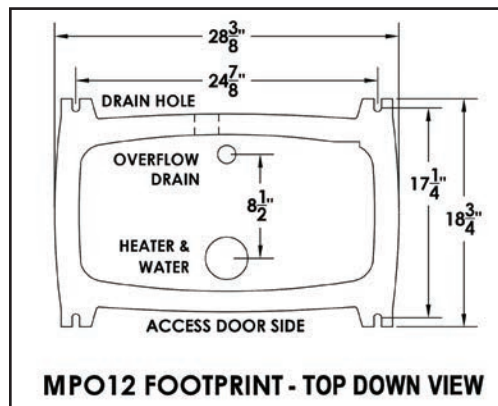


Dependable, non-siphoning Durapride valve (50 years of use).

2" built-in drain

Overflow port can be used either as an internal drain or it can be used for optional continuous flow operation.

Proven (30 years of use)
250 watt heater



USA Patent Number 6,722,313 B2

Industry's Best Warranty!
- All Poly Main Components
5 Years Unconditional Warranty
- And An Additional 11 Year Pro-Rated Warranty
- Valve & Heater-18 Months Unconditional Warranty.

SPECIFICATIONS

Model No.	Approximate Capacity			Size Inches (cm)					Heater Electric	Shipping Weight Lbs.
	Animals	Water		Drink Opening	Drink Height	Overall Width	Overall Length	Overall Height		
		Gallons	Liters							
MP012E	150 head of most any species except swine	12	45.4	9" x 15" (22.9 x 38.1)	20" (50.8)	19" (48.3)	31" (78.7)	25 1/2" (64.8)	250 Watts	43 (19.5)
MP012N	150 head of most any species except swine	12	45.4	9" x 15" (22.9 x 38.1)	20" (50.8)	19" (48.3)	31" (78.7)	25 1/2" (64.8)	none	41 (18.6)

* Shippable via ground package.